

NOTE

WHILE EVERY ATTEMPT HAS BEEN MADE TO AVOID MISTAKES IN THE PREPARATION AND DESIGN OF THESE PLANS, PLAN AHEAD, INC. CAN NOT GUARANTEE AGAINST HUMAN ERROR. THE CONTRACTOR ON THE JOB MUST CHECK ALL LOCAL CODES, DIMENSIONS, AND DETAILS PRIOR TO THE START OF ACTUAL CONSTRUCTION. PLAN AHEAD, INC. ASSUMES NO RESPONSIBILITY FOR ANY DAMAGES, INCLUDING STRUCTURAL FAILURES, DUE TO ANY ERRORS, OMISSIONS, OR DEFICIENCIES IN THE DESIGN OR BLUEPRINTS.

REVISIONS

DATE: REV. NO.



FRONT ELEVATION

SCALE: 1/4" = 1'-0"

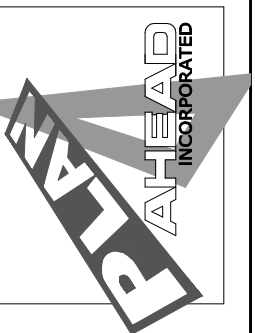


REAR ELEVATION

SCALE: 1/4" = 1'-0"

Park Springs  
Louisville, Ky

CUSTOM & STOCK HOUSE PLANS BY  
**PLAN AHEAD INC.**  
1006 TENTH STREET  
JEFFERSONVILLE, INDIANA 47130  
PHONE (502) 817-7526  
VISIT US AT WWW.PLANAHEAD.ORG



FILE:  
PA02281  
DATE:  
12/15/18  
DRAWN BY:  
A.WILLIAMS

A-1

**NOTE**

WHILE EVERY ATTEMPT HAS BEEN MADE TO AVOID MISTAKES IN THE PREPARATION AND DESIGN OF THESE PLANS, PLAN AHEAD, INC. CAN NOT GUARANTEE AGAINST HUMAN ERROR. THE CONTRACTOR ON THE JOB MUST CHECK ALL LOCAL CODES, DIMENSIONS, AND DETAILS PRIOR TO THE START OF ACTUAL CONSTRUCTION. PLAN AHEAD, INC. ASSUMES NO RESPONSIBILITY FOR ANY DAMAGES, INCLUDING STRUCTURAL FAILURES, DUE TO ANY ERRORS, OMISSIONS, OR DEFICIENCIES IN THE DESIGN OR BLUEPRINTS.

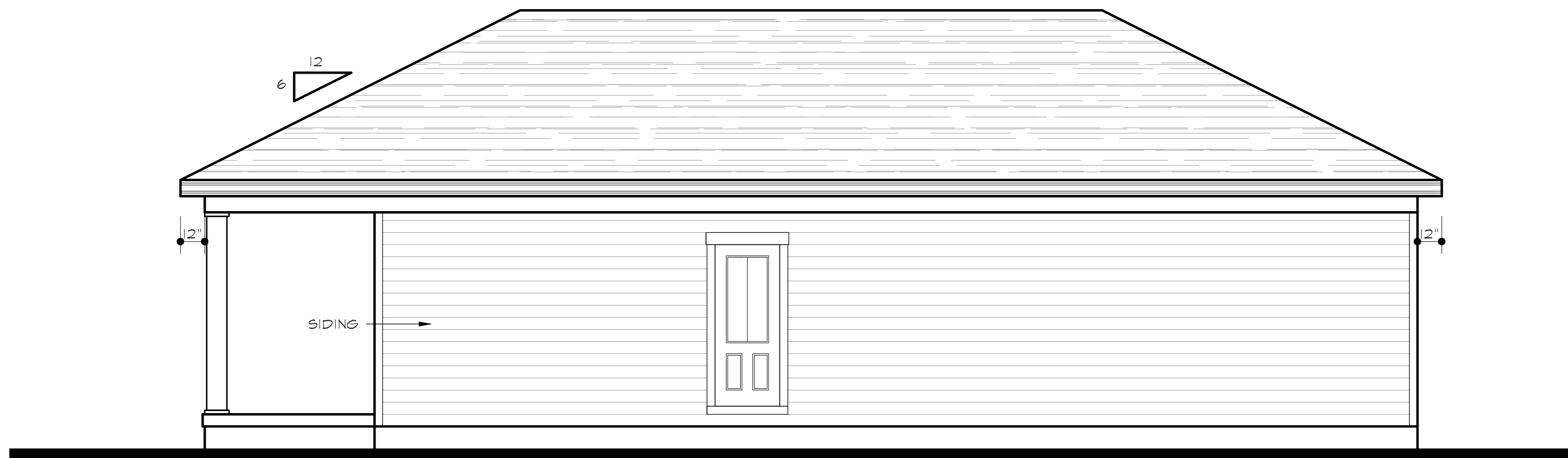
**REVISIONS**

DATE: REV. NO.



**LEFT SIDE**

SCALE: 1/4" = 1'-0"

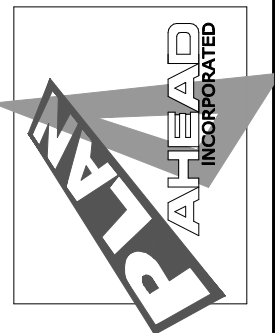


**RIGHT SIDE**

SCALE: 1/4" = 1'-0"

RESIDENCE FOR:

CUSTOM & STOCK HOUSE PLANS BY  
**PLAN AHEAD INC.**  
1006 TENTH STREET  
JEFFERSONVILLE, INDIANA 47130  
PHONE (502) 817-7526  
VISIT US AT WWW.PLANAHEAD.ORG

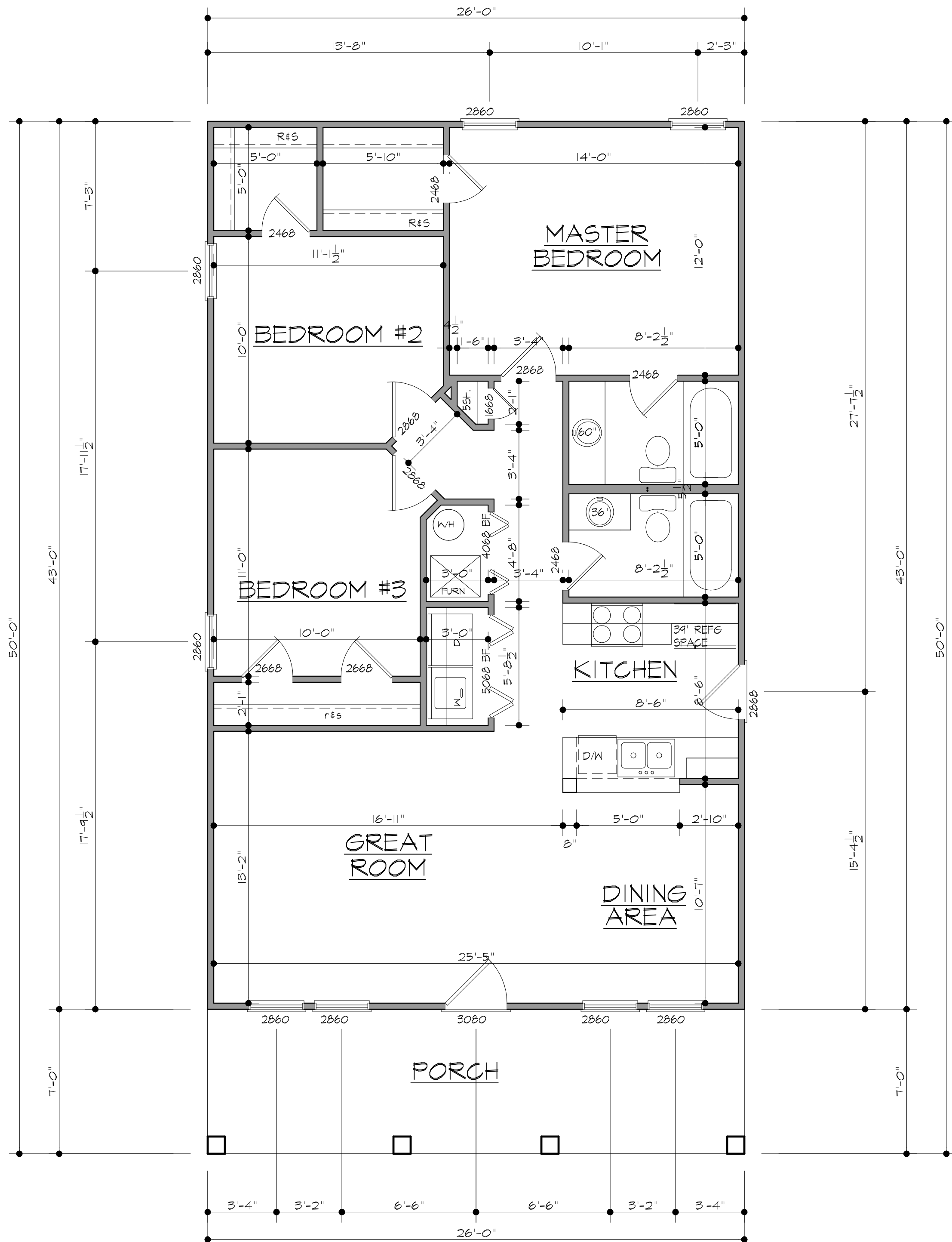


FILE:  
**PA02281**  
DATE:  
**12/15/18**  
DRAWN BY:  
**A.WILLIAMS**

**A-3**

**NOTE**  
 WHILE EVERY ATTEMPT HAS BEEN MADE TO AVOID MISTAKES IN THE PREPARATION AND DESIGN OF THESE PLANS, PLAN AHEAD, INC. CAN NOT GUARANTEE AGAINST HUMAN ERROR. THE CONTRACTOR ON THE JOB MUST CHECK ALL LOCAL CODES, DIMENSIONS, AND DETAILS PRIOR TO THE START OF ACTUAL CONSTRUCTION. PLAN AHEAD, INC. ASSUMES NO RESPONSIBILITY FOR ANY DAMAGES, INCLUDING STRUCTURAL FAILURES, DUE TO ANY ERRORS, OMISSIONS, OR DEFICIENCIES IN THE DESIGN OR BLUEPRINTS.

REVISIONS	
DATE:	REV. NO.



# FIRST FLOOR PLAN

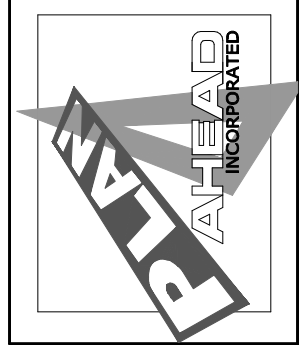
SCALE: 1/4" = 1'-0"  
 1118 SQ. FT. +/-

**SMOKE DETECTORS**  
 INSTALL SMOKE ALARMS IN ALL SLEEPING ROOMS AND OUTSIDE OF EACH SEPARATE SLEEPING ROOM AREA IN THE IMMEDIATE VICINITY OF THE BEDROOMS.  
 INSTALL AT LEAST ONE SMOKE DETECTORS ON EACH ADDITIONAL STORY INCLUDING BASEMENT.  
 ALL SMOKE ALARMS SHALL BE INTERCONNECTED AND HARD WIRED WITH BATTERY BACK UP.

**WINDOW NOTES**  
 ALL WINDOWS MUST BE OPENED FROM THE INSIDE AND WITHOUT THE USE OF A SEPERATE TOOL.  
 AT LEAST ONE WINDOW IN A SLEEPING ROOM SHALL BE CONSIDERED EMERGENCY RESCUE ACCESS AND HAVE A MINIMUM NET CLEAR OPENING AREA OF 5.7 SQUARE FEET AND THE WINDOW SILL SHALL NOT EXCEED 44" IN HEIGHT.  
 THE WINDOW THAT IS CONSIDERED EMERGENCY RESCUE ACCESS SHALL HAVE A MINIMUM NET CLEAR OPENING WIDTH OF 20" AND A MINIMUM NET CLEAR OPENING HEIGHT OF 24".

**Park Springs**  
 Louisville, Ky

CUSTOM & STOCK HOUSE PLANS BY  
**PLAN AHEAD INC.**  
 1006 TENTH STREET  
 JEFFERSONVILLE, INDIANA 47130  
 PHONE (502) 817-7526  
 VISIT US AT WWW.PLANAHEAD.ORG



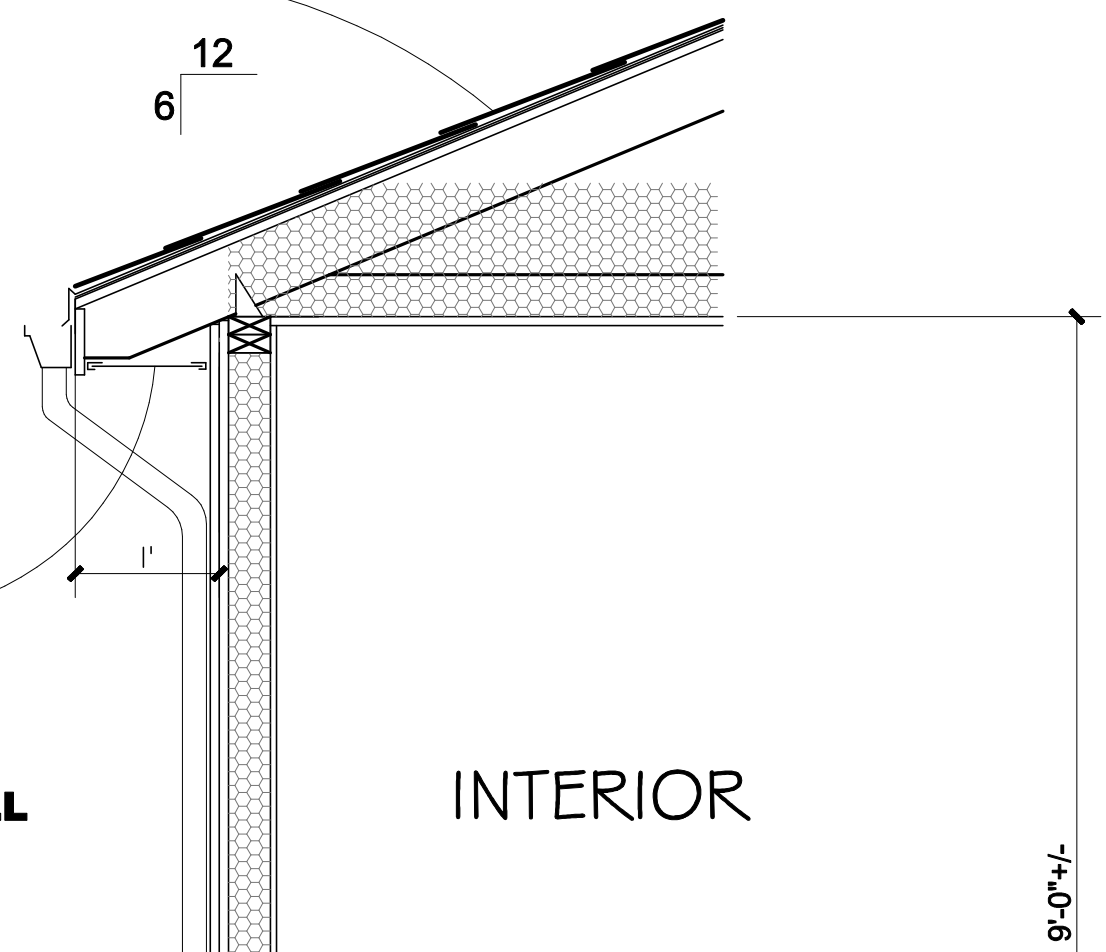
FILE: PA02281  
 DATE: 12/15/18  
 DRAWN BY: A.WILLIAMS

**A-2**

**NOTE**  
 WHILE EVERY ATTEMPT HAS BEEN MADE TO AVOID MISTAKES IN THE PREPARATION AND DESIGN OF THESE PLANS, PLAN AHEAD, INC. CAN NOT GUARANTEE AGAINST HUMAN ERROR. THE CONTRACTOR ON THE JOB MUST CHECK ALL LOCAL CODES, DIMENSIONS, AND DETAILS PRIOR TO THE START OF ACTUAL CONSTRUCTION. PLAN AHEAD, INC. ASSUMES NO RESPONSIBILITY FOR ANY DAMAGES, INCLUDING STRUCTURAL FAILURES, DUE TO ANY ERRORS, OMISSIONS, OR DEFICIENCIES IN THE DESIGN OR BLUEPRINTS.

**TYPICAL ROOF**

ROOF SHINGLES  
 1 LAYER  
 15# FELT UNDER-LAYMENT  
 7/16" O.S.B. DECK  
 WOOD TRUSSES @ 24" O.C. W/ FULL THICKNESS INSULATION R38  
 5/8" DRYWALL CEILING  
 HURRICANE CLIP EACH TRUSS END  
 ALUM. DRIP EDGE



**TYPICAL O.H.**

ALUM. GUTTER W/ DOWNSPOUTS  
 1X6 GUTTER BOARD  
 VINYL SOFFIT VENTED

**TYPICAL EXTERIOR WALL**

SIDING EXTERIOR FINISH  
 1/2" SHEATING EXTERIOR  
 2X4 WOOD STUDS @ 16" O.C. W/ R-15 FIBER-GLASS BATT INSULATION  
 1/2" DRY-WALL INTERIOR  
 WOOD BASE

**TYPICAL CONC. SLAB**

4" CONC. SLAB W/ 6X6 10/10 W.W.F. ON 6 MIL. VAPOR BARRIER ON 4" WELL COMP. ROCK FILL  
 PROVIDE 1 1/2" RIGID PERIMETER INSULATION AS SHOWN.  
 ANCHOR WALL W/ 1/2" DIA ANCHOR BOLTS @ 6'-0" O.C.

BASE FLASHING

**TYPICAL FOUNDATION WALL**

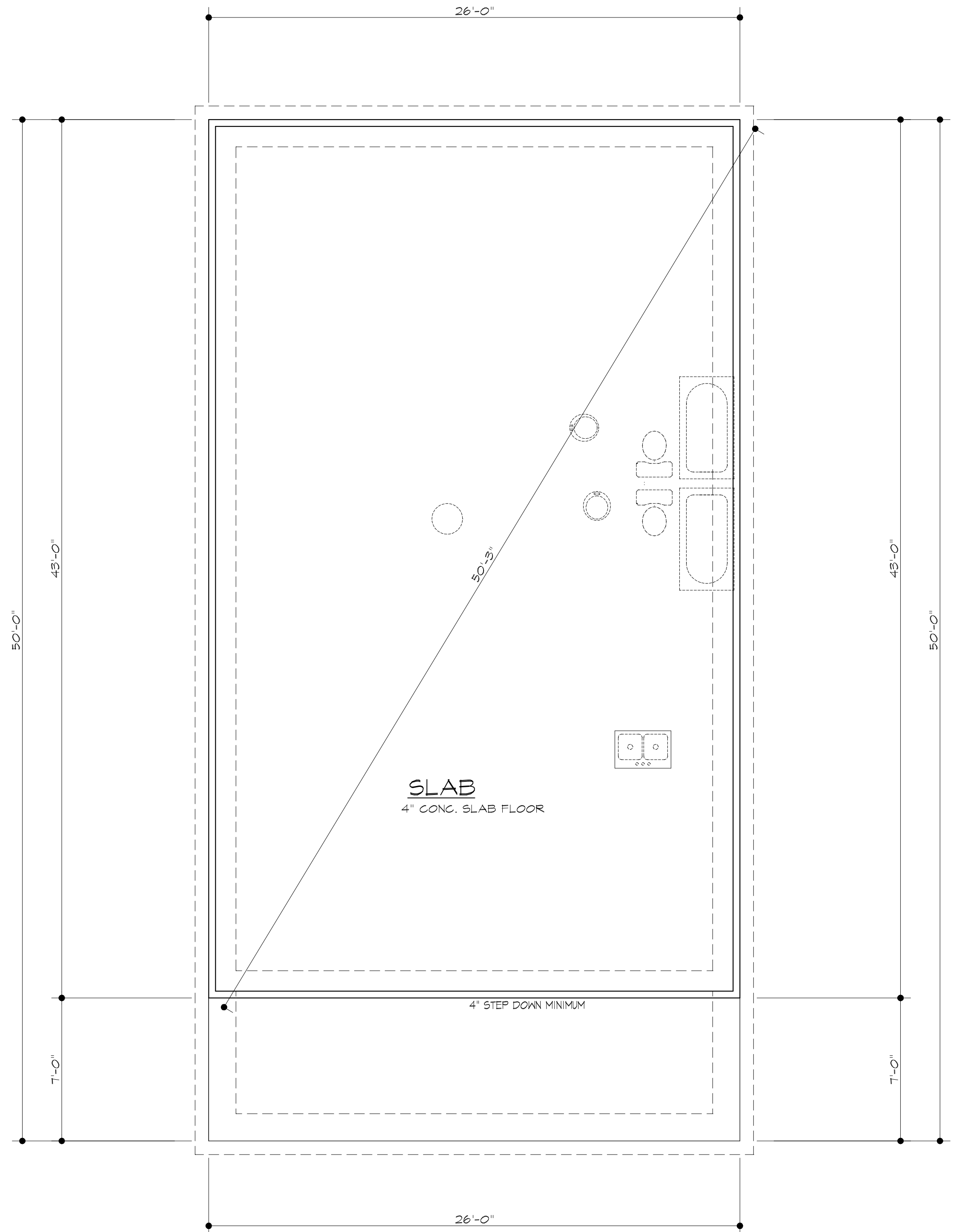
9" CONC. FOUND. WALL W/ #4'S @ 48" O.C. EACH WAY

**TYPICAL FOOTING**

12"D X 24"W CONC. FOOTING W/ 2#4'S CONT.  
 TIE FOOTING TO WALL W/ STL. REBAR BENT L'S #4'S @ 48" O.C. VERT. LAP A MIN. 2'-0" W/ WALL REBAR  
 2-4" PERIMETER PERFORATED DRAIN PIPES INSIDE/OUTSIDE FOOTING

**TYPICAL WALL SECTION**

SCALE: 3/4" = 1'-0"



**FOUNDATION PLAN**

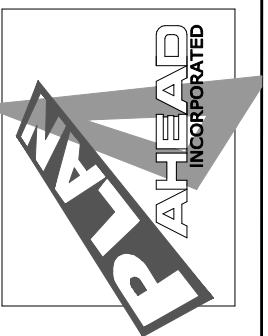
SCALE: 1/4" = 1'-0"

**REVISIONS**

DATE: REV. NO.

RESIDENCE FOR:

CUSTOM & STOCKHOUSE PLANS BY  
**PLAN AHEAD INC.**  
 1006 TENTH STREET  
 JEFFERSONVILLE, INDIANA 47130  
 PHONE (502) 817-7526  
 VISIT US AT WWW.PLANAHEAD.ORG



FILE: PA02281

DATE: 12/15/18

DRAWN BY: A.WILLIAMS

**A-4**